

# DuraMon

Structural health corrosion  
monitoring solutions

Yurena Seguí Femenias  
(CEO and co-founder)

Spin-off

**ETH** zürich

## V. Wissing (Germany's traffic minister):

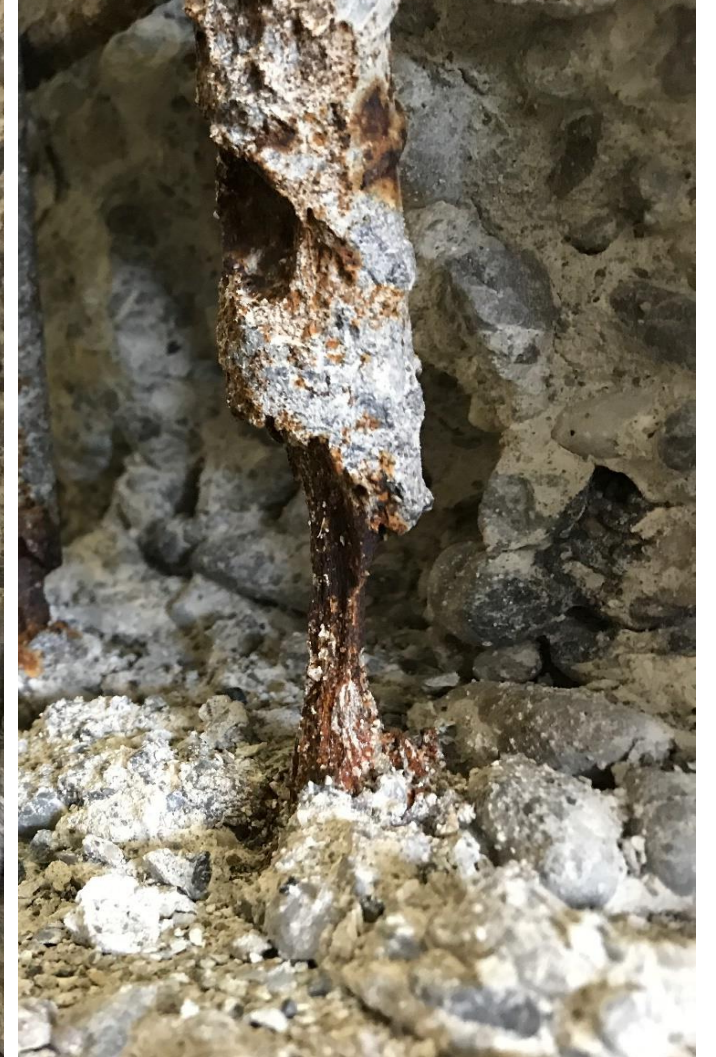
“...there are 4,000 bridges that will have to be repaired or rebuilt by 2030. **We can't do everything at the same time. We have to prioritize, because there simply isn't the capacity to rehabilitate all bridges at the same time...**”





# Limitations of engineering and condition assessment:

Damage is often not detected and a forecast is hardly obtained



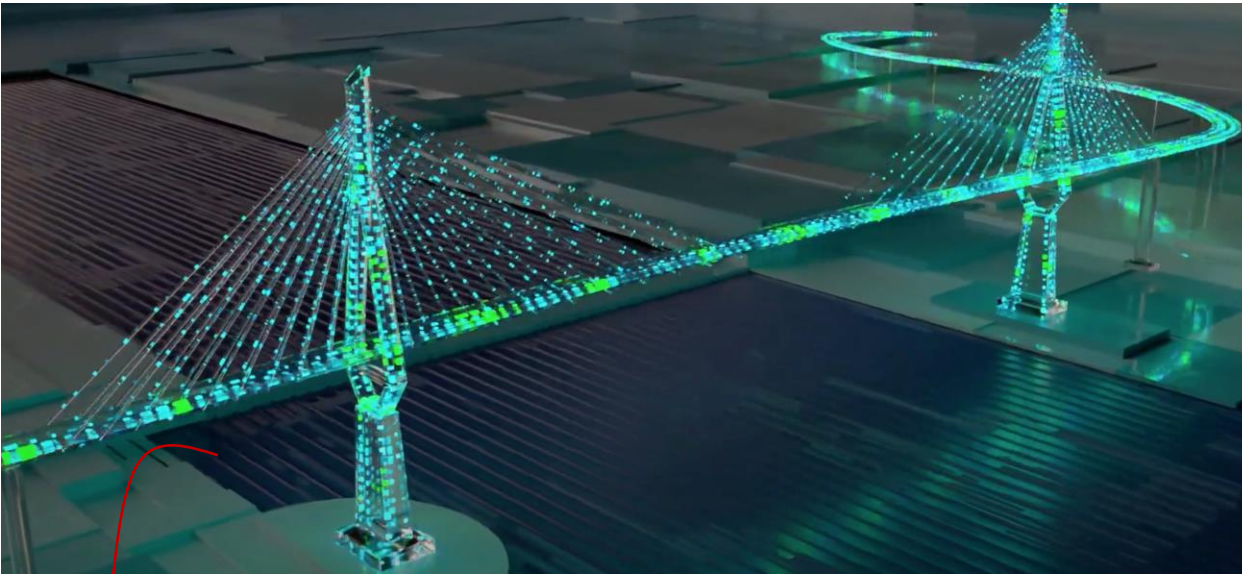


*Status quo*

V. Wissing (Germany's traffic minister):

“...to determine which bridges need to be renovated most urgently,  
**we have to move towards using sensors...**”

Digital twin & predictive maintenance



Who provides the sensors?

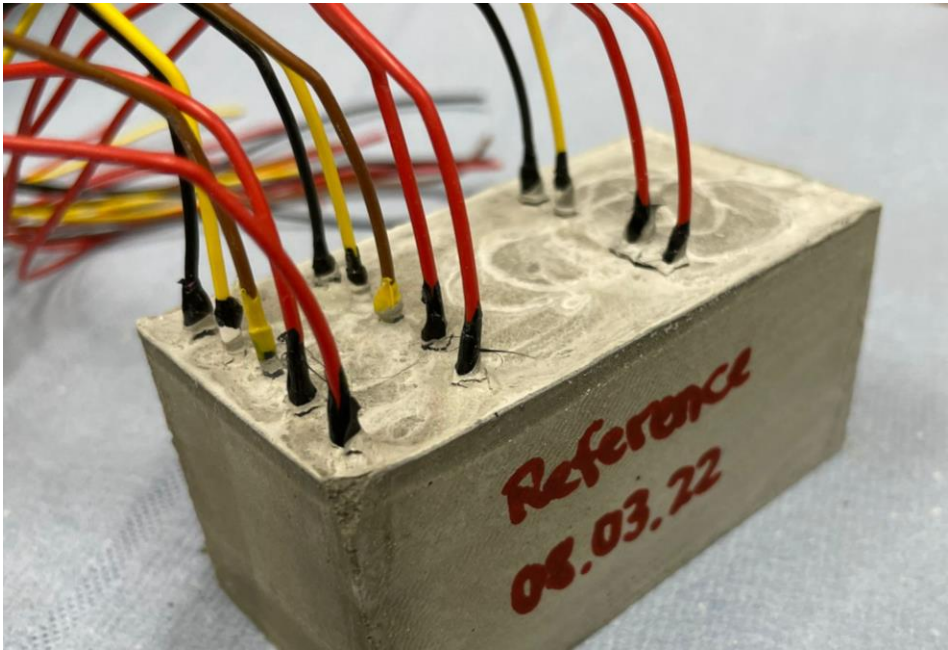
New repair products & methods



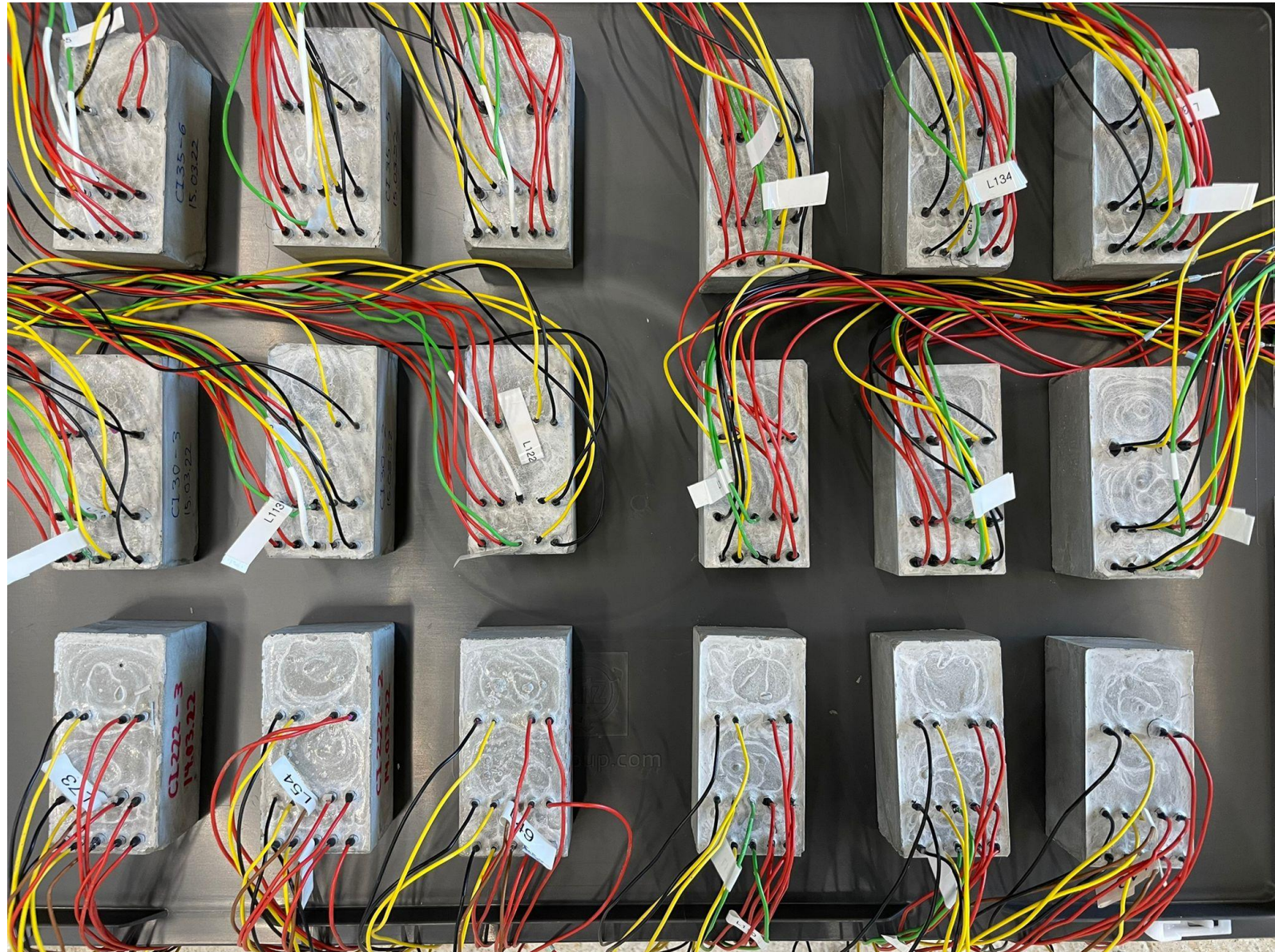
Who proves the efficiency of these new products?



# Our unique sensor technology



- ✓ Science-based proprietary sensor technology
- ✓ Patent filed
- ✓ Only solution monitoring all relevant parameters
- ✓ Validated over > 5 years





# An all-in-one monitoring solution

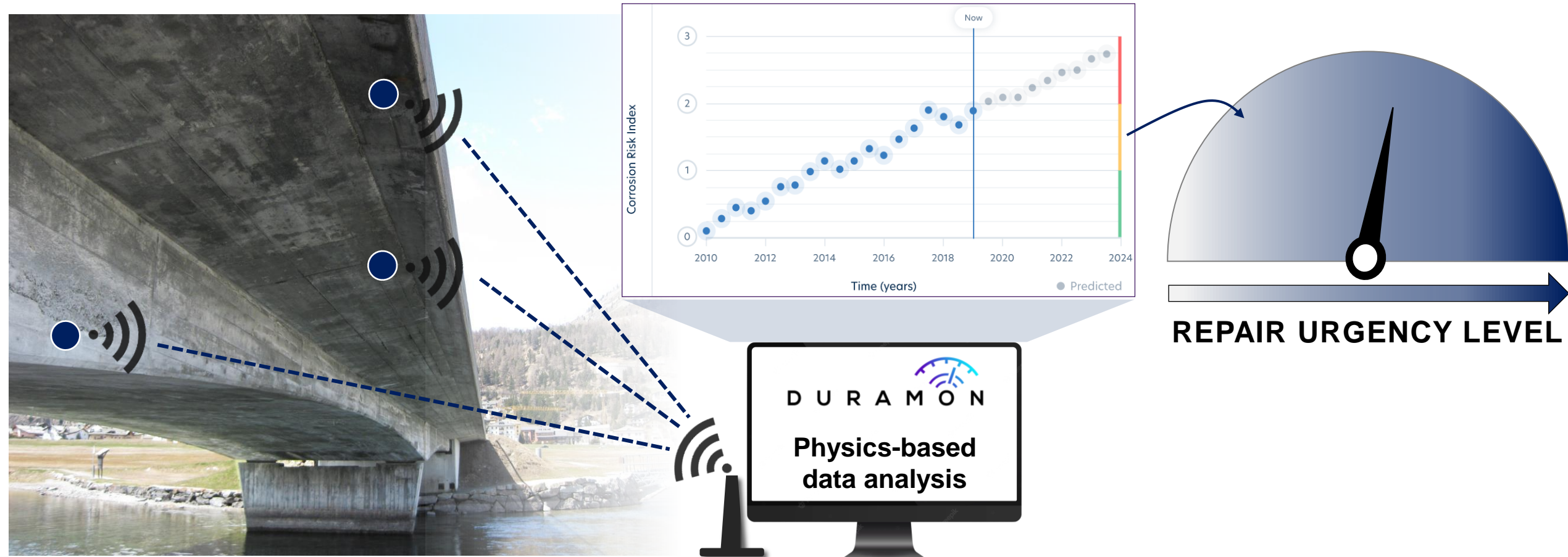
Wireless multi-parameter sensors



Smart Analytics



Added Value for Decision Takers



# Only solution that allows efficient & durable maintenance

Relevance for  
decision-takers

D U R A M O N

- ✓ Corrosion initiation monitoring
- ✓ Corrosion propagation monitoring
- ✓ Long-term solution
- ✓ Data analysis
- ✓ Automated data acquisition & transfer

 **SENORTEC** GMBH



**BS2**  
Sicherheitssysteme



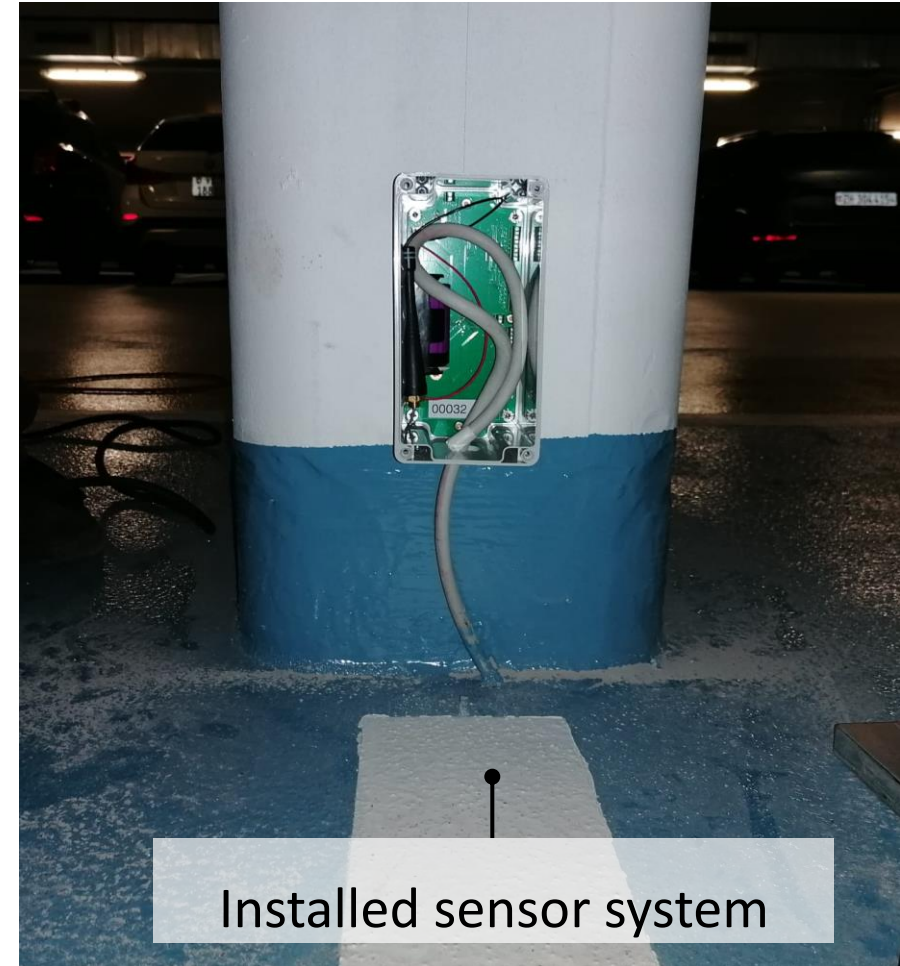
corrodium



→ Early stage warning capability

# DuraMon continuously provides added value for decision takers to determine the efficiency and durability of different repair methods

Parking garage Bahnhofsgebäude Visp, Switzerland (ongoing project)





# DuraMon continuously provides added value for decision takers to determine the efficiency and durability of different repair methods

Bridge in Basel (in discussion)

**AEGERTER & BOSSHARDT**  
Ingenieure und Planer



Schweizerische Eidgenossenschaft  
Confédération suisse  
Confederazione Svizzera  
Confederaziun svizra

Bundesamt für Strassen ASTRA



## Key projects to gain visibility and move towards industry 4.0:

DuraMon is the partner providing data on corrosion state and forecast for the creation of the digital twin of the Stade-strasse bridge (Hamburg)







Spin-off

**ETH** zürich

**Thank you for your attention!**

**Yurena Seguí Femenias**  
yurena@duramon.ch

DuraMon GmbH  
c/o ETH Zürich  
Institut f. Baustoffe (IfB)  
HIF 89.1  
Laura-Hezner-Weg 7  
8093 Zürich